

# RENEWABLE ENERGY CERTIFICATE (REC)



**Electricity Generating Authority of Thailand**  
52 m.2 Charansanitwong rd. Bangkruai  
Bangkruai Nonthaburi 11130 THAILAND



Email: [irecissuer@egat.co.th](mailto:irecissuer@egat.co.th)  
Website: <https://irecissuer.egat.co.th>

## 1. REDUCE Energy Demand



### Energy Efficiency

Seek for energy waste, behavioral improvements, cost-effective retrofits



### Technology Upgrades

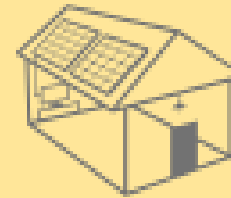
- Identify the timing for upgrades or replacements
- emerging options for step-changes in energy efficiency



### Sustainable Growth

To ensure the lowest lifetime cost for energy is locked in from the beginning such as efficient design, technology selection and control plans.

## 2. PRODUCE Renewable Energy



Behind-the-Meter



In front of the Meter  
(Grid Connection)

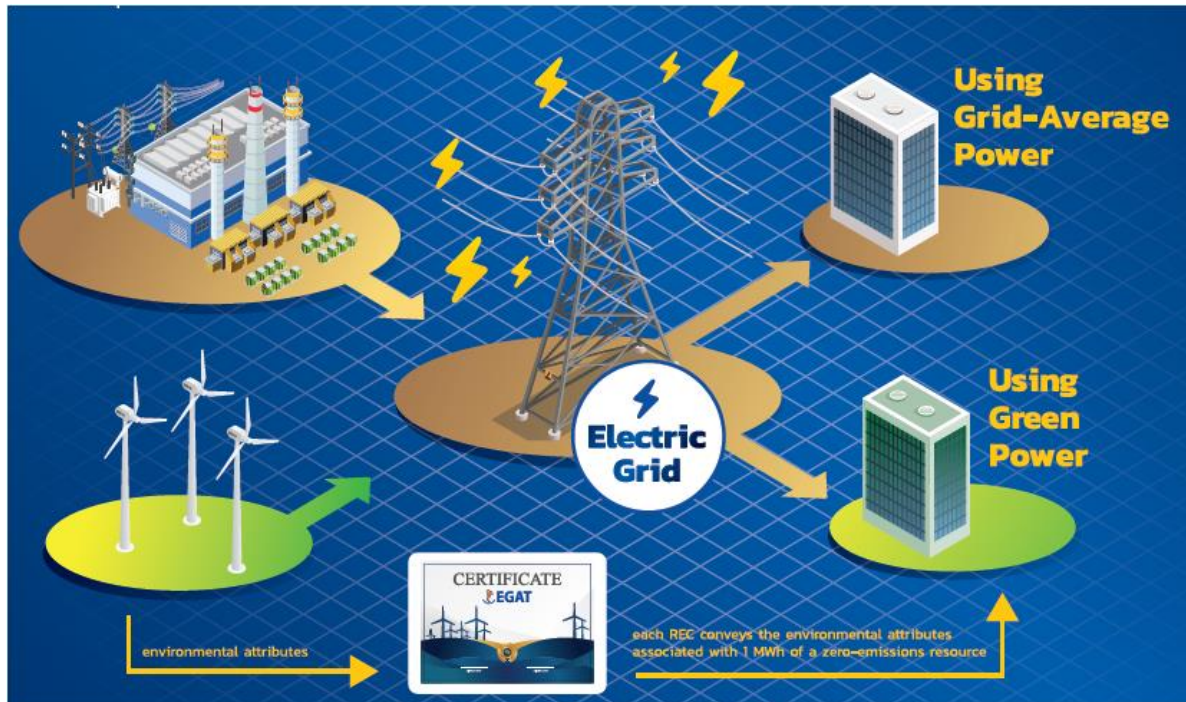
## 3. PURCHASE Renewables



Power Purchase  
Agreement

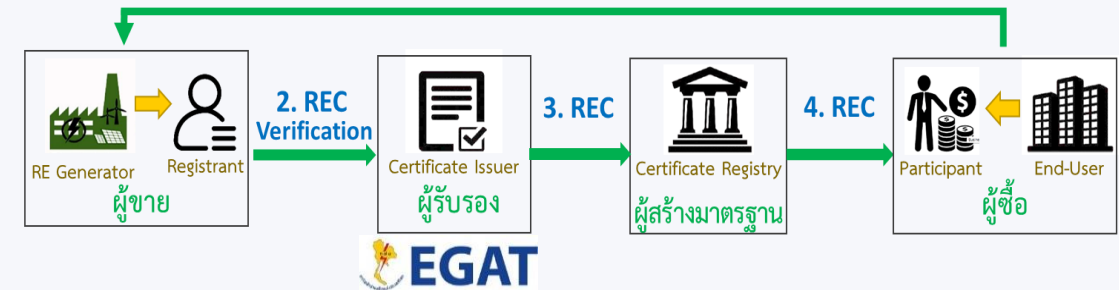


Purchase RECs  
(Renewable Energy Certificate)



## THE RELIABILITY AND ROBUSTNESS OF THE I-REC TRACKING SYSTEM

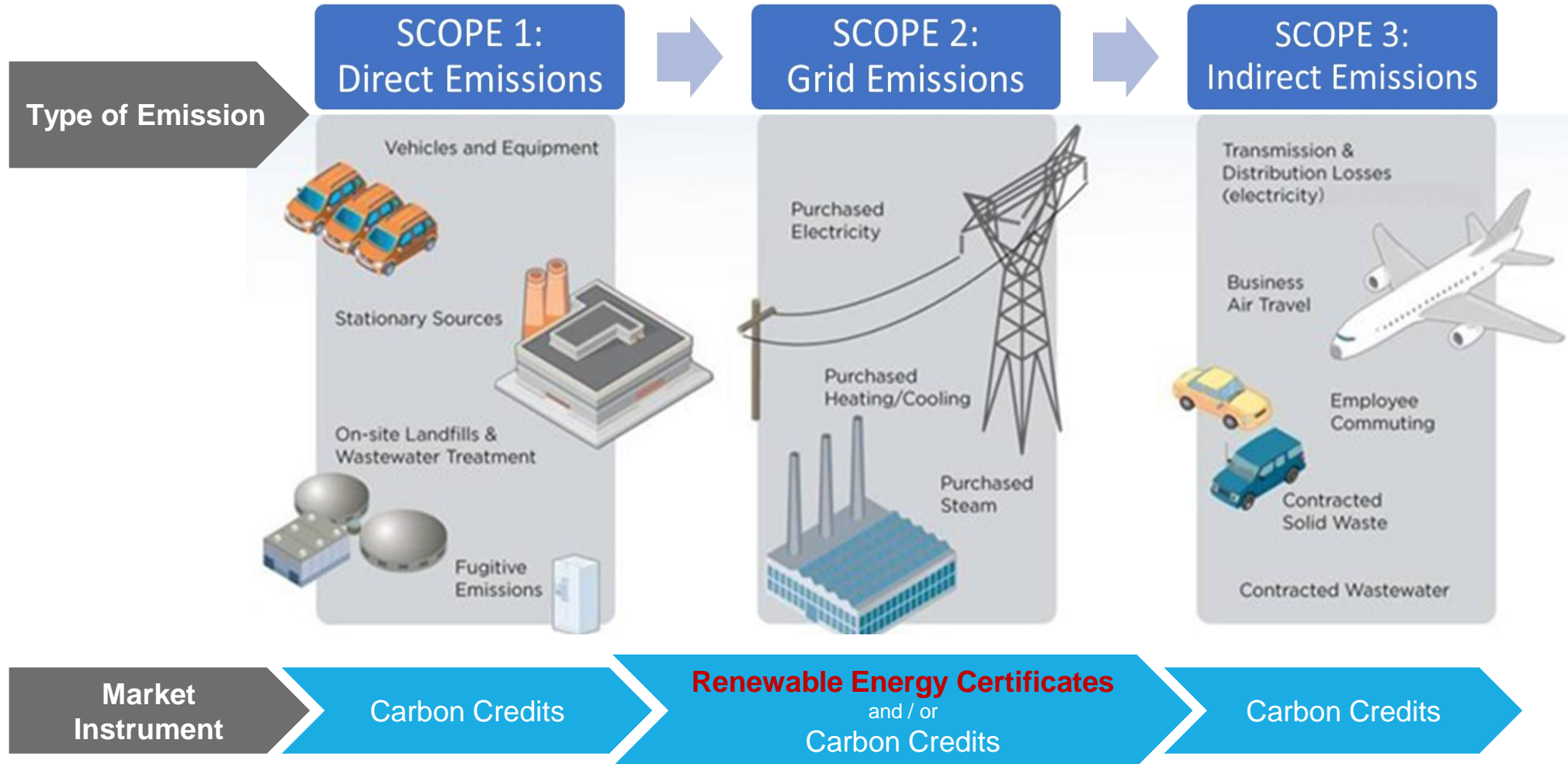
### 1. Renewable Energy Certificate Payment



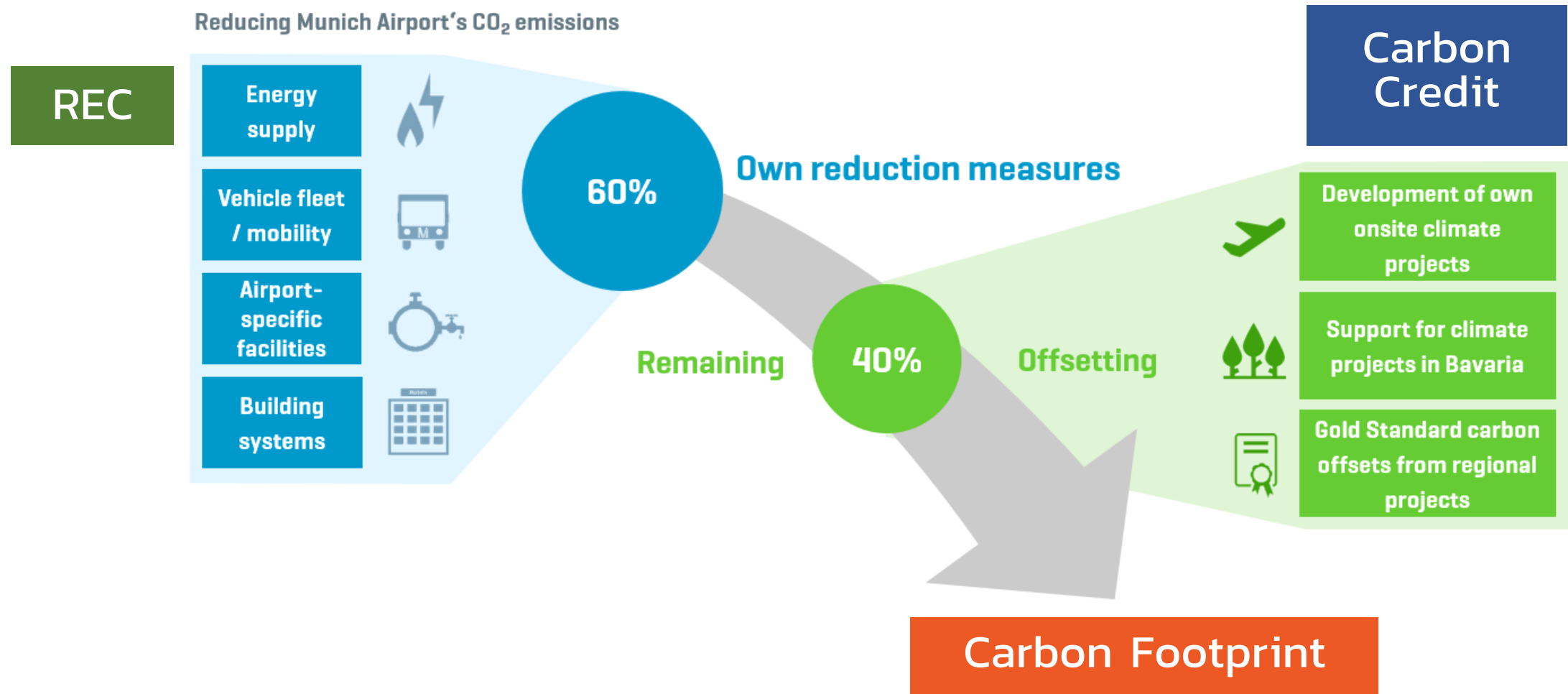
1. Organizations and individuals can buy RECs from RE Generator or any suppliers
2. Registrant request certified RECs from the local Issuer
3. Certified RECs will be transfer trough I-REC registry tracking system
4. Market participants who have accounts with the tracking systems can transact the I-RECs

A **renewable energy certificate**, or REC, is a market-based instrument that represents the property rights to the environmental, social and other **non-power** attributes of renewable electricity generation.

Each REC represents proof that 1 MWh of renewable energy has been produced and embodies the environmental benefits that amount of renewable energy generated. REC registries electronically issue RECs based on renewable energy generators' output. A REC, and its associated attributes and benefits, can be sold together or separately from the underlying physical electricity associated with the renewable-energy generation. RECs are an effective and recognized way of reaching emission targets and improving sustainability.



## First reduce – then offset



## How does REC support your “renewables journey”?



- Supporting access to clean energy at a reasonable cost. (SDGs7)
- Responsible consumption and production (SDGs12)
- Strengthen supporting in Climate strategy (SDGs13)



- Accelerate your achievement of carbon reduction targets with REC in GHG Protocol Scope 2



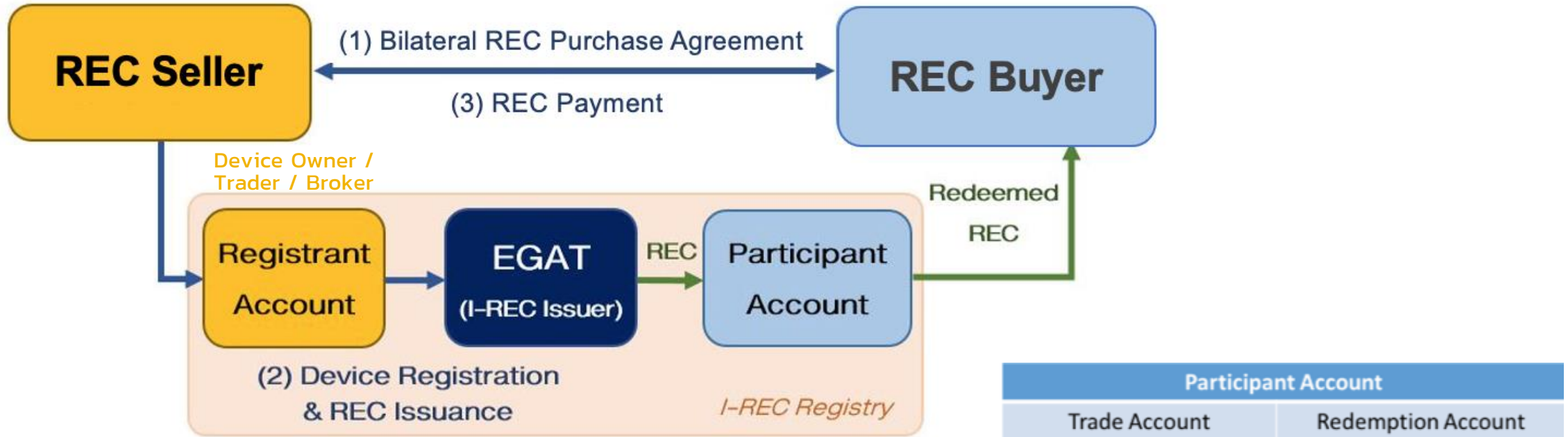
MEMBER OF  
**Dow Jones Sustainability Indices**  
 In Collaboration with RobecoSAM

- Supporting more direct evidence in Environmental scope (Environmental Reporting / Policy / Management System, Climate strategy and Electricity Generation)



- Increased publicity with RE100 initiative
- Determine the appropriate investment period





	Registrant Account		Participant Account	
<b>Fee</b>	1. Registrant application fee	0 Baht	1. One-time trade account opening fee	500 EUR
	2. One-time device registration fee (5-year validity)	38,000 Baht	2. Annual trade account fee	2,000 EUR
	3. Device renewal fee after 5-year validity	15,200 Baht	3. Additional redemption account fee	0 EUR
	4. Issuance fee (per MWh)	0.95 Baht	4. Redemption fee (per MWh)	0.06 EUR
<b>Contact for Application</b>	EGAT (Thailand - Local Issuer) : irecissuer@egat.co.th		The I-REC Standard : secretariat@irecstandard.org	

# RETURN ON SUSTAINABILITY

## IMPACT

RECs are a market-based instrument and an effective way to increase the market demand for renewable energy. Buying RECs demonstrates environmental leadership, sends a signal to the market that you prefer to consume renewable energy, and shows your commitment to changing energy behavior. RECs also give power producers an extra income source, making it more appealing to build more renewable energy production.

## A PROVEN TRACK RECORD OF SUCCESS

The I-REC Standard ensures that all RECs are in adherence with major international sustainability standards including the GHGP, CDP, RE100, ISO and others. Energy consumers can use I-RECs to meet the requirements of these standards and/or corporate social responsibility policies. I-RECs are trusted by market players and NGOs alike. Stringent environmental labels have recognized them when they are produced from compliant production devices. Consequently, attribute tracking systems adherent to the I-REC Standard have a proven track record of robustness and trustworthiness, which have led to year-on-year increases in market volumes.

The I-REC Standard is also recognized by national governments in multiple jurisdictions as the chosen method of end-user procurement of renewables.

